

TECHNICAL PARAMETER

Vacuum Contactor

Item	Unit	Value	
Rated voltage	kV	12	
Rated insulation level	Lighting impulse withstand voltage(peak)	kV	75
	Power frequency withstand voltage(1min)		42
Rated frequency	Hz	50/60	
Rated current	A	400	630
Rated breaking current	A	4000	6300
Rated making current	A	4000	6300
Limit breaking current	kA	4.5	6.3
Rated short time withstand current(4s)	kA	4	6.3
Current overload tolerance(1s)	kA	8	9.5
Maximum rated peak withstand current	kA	10	16
Rated operating mode		Continuous running duty-type	
Hold mode		Mechanical holding, Electrical holding	
Mechanical endurance	Cycles	1,000,000*	
Electrical endurance		Rated current	1,000,000
	Cycles	AC-3	250,000
		AC-4	10,000

Remark: *change mechanical locking every 300,000 cycles

Vacuum Contactor-fuse Combined Electric Appliance

Item	Unit	Value	
Rated voltage	kV	7.2	12
Rated insulation level	Lighting impulse withstand voltage(peak)	60	75
	Power frequency withstand voltage(1min)	32	42
Rated frequency	Hz	50/60	50/60
Rated current(motor protection)	A	25~355	6.3~224
Rated current(transformer protection)	A	6.3~224	6.3~224
Rated short-circuit breaking current	kA	50	50
Rated junction current	A	≤3200	≤3200
Mechanical endurance	Cycles	1,000,000*	1,000,000*
		Rated current	1,000,000
Electrical endurance	Cycles	AC-3	250,000
		AC-4	10,000

Remark: *change mechanical locking every 300,000 cycles

TECHNICAL PARAMETER

Mechanical Characteristics

Item	Unit	Value
Phase spacing	mm	150±0.5
Clearance between open contacts	mm	6±1
Overtravel	mm	2.5±0.5
Average closing speed	m/s	0.2~0.4
Average opening speed	m/s	0.4~1
Closing time	Mechanical holding	≤100, ≤160*
	Electrical holding	≤150
Opening time	Mechanical holding	≤70, ≤130*
	Electrical holding	≤100
Closing bounce time	ms	VC≤2, C-F≤3
Synchronization of 3-phase contact closing and opening	ms	≤2
Loop resistance	μΩ	VC≤150, C-F≤200
Weight	kg	V: 46, C-F: 98

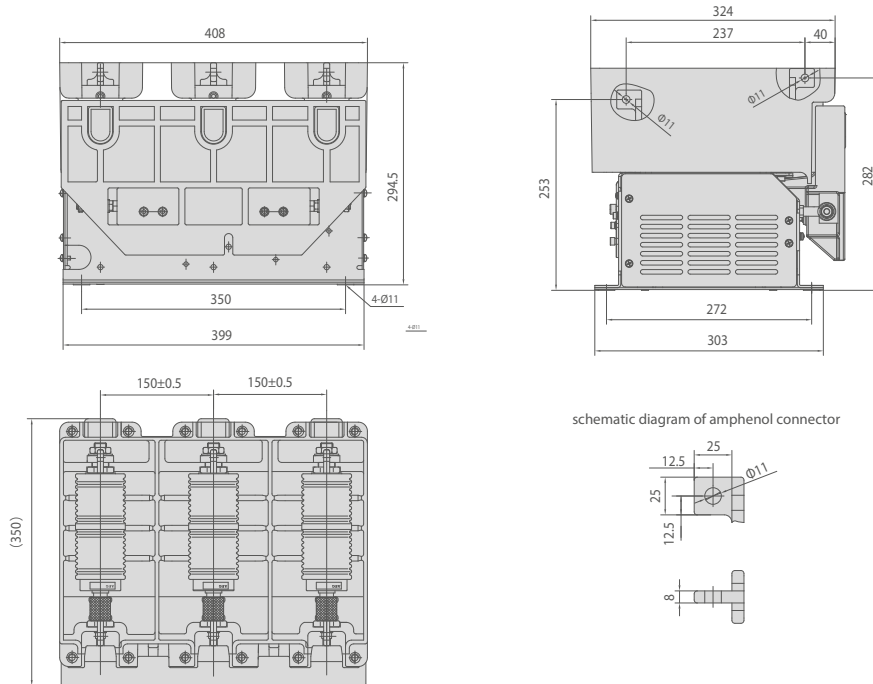
Remark: *value include relay operation time

Operating Mechanism

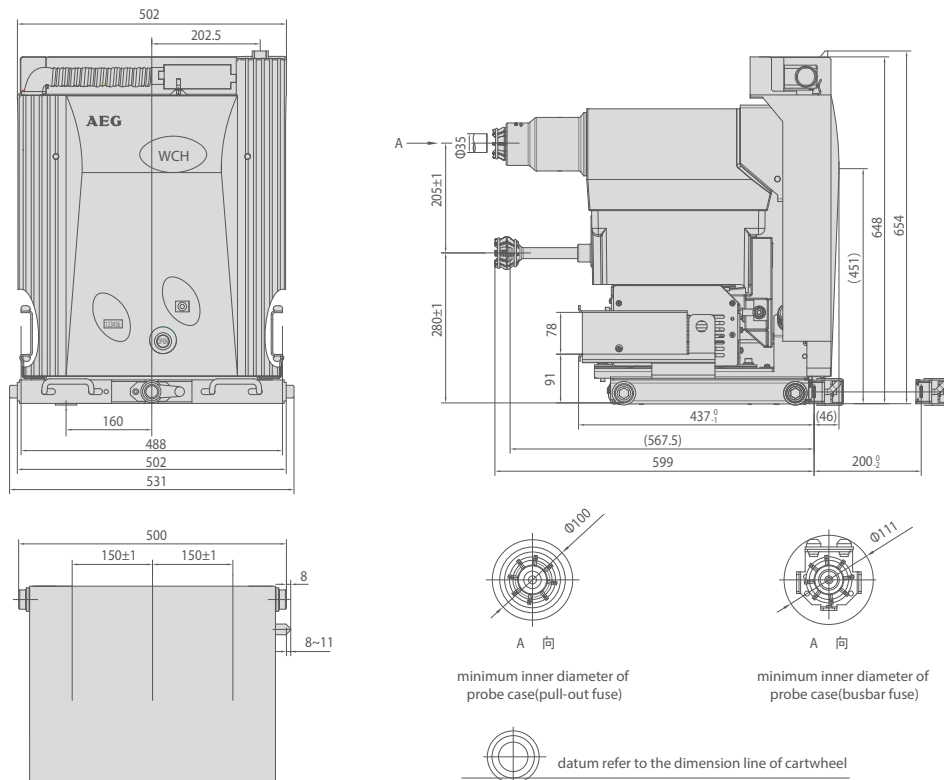
Item	Value
Rated operation voltage & current (mechanical holding)	AC/DC220V closing current 3A opening current 5A
	AC/DC110V closing current 6A opening current 10A
Rated operation voltage & current (electrical holding)	AC/DC220V closing current 3A holding current 0.5A
	AC/DC110V closing current 6A holding current 1A
Rated operation frequency	≤600cycles/h
Short-time maximum operation frequency	≤1200cycles/h

INSTALLATION DIMENSION

Fixed VC (Assembly Insulation Frame)



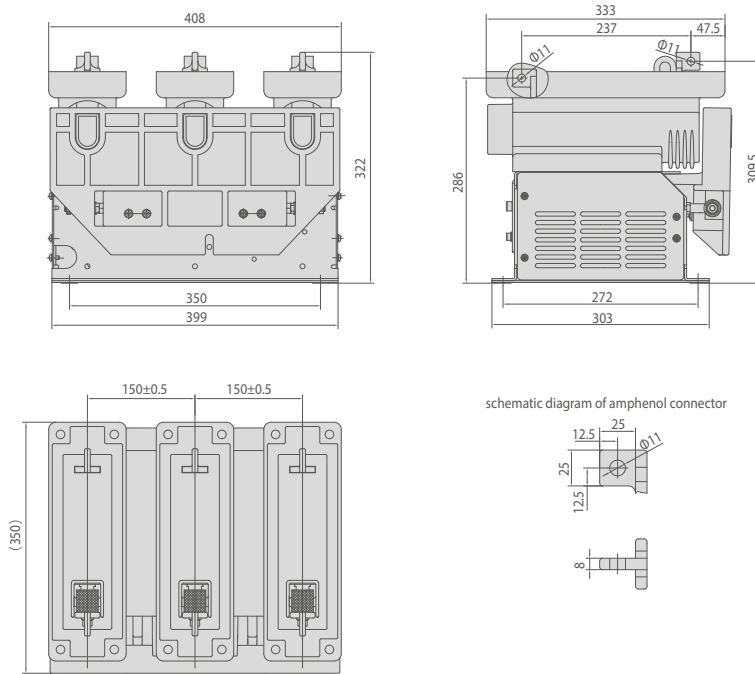
Vacuum Contactor-fuse Combined Electric Appliance (Assembly Insulation Frame)



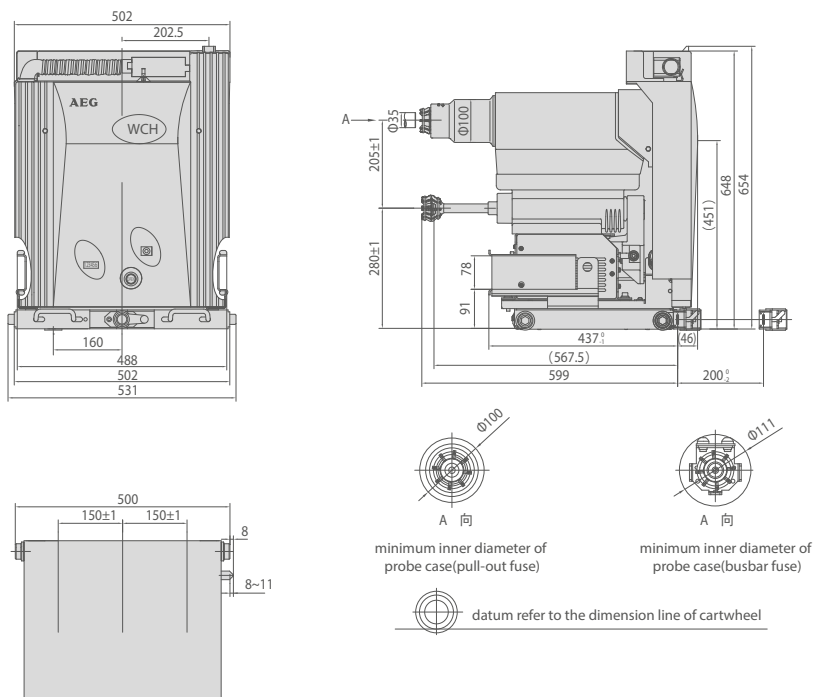
Remark: size of fixed contact $\text{Ø}35\text{mm}$, mesh size of moving contact & fixed contact $\geq 15\text{mm}$.

INSTALLATION DIMENSION

Fixed VC (Embedded Pole)



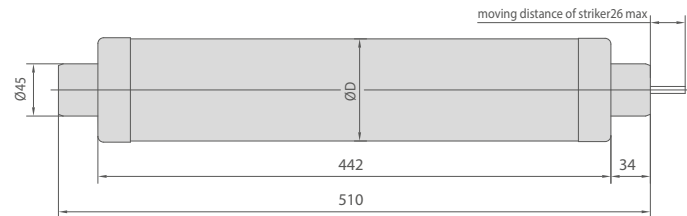
Vacuum Contactor-fuse Combined Electric Appliance (Embedded Pole)



Remark: size of fixed contact $\phi 35\text{mm}$, mesh size of moving contact & fixed contact $\geq 15\text{mm}$.

Size of fuse

Pull-out fuse



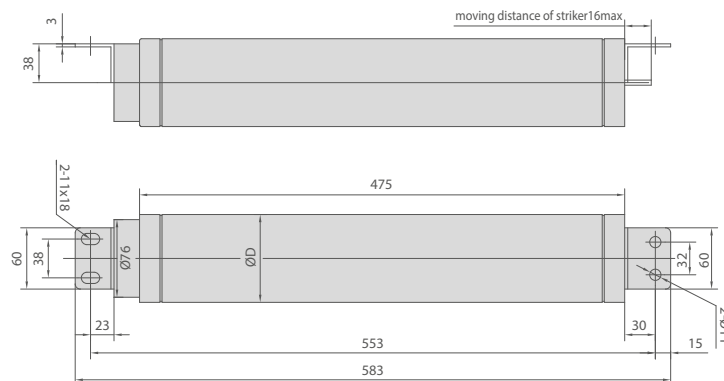
Transformer protection

Type	Rated current	ØD
XRNT1-7.2	6.3, 10, 16, 20, 25, 31.5, 40	Ø51
	50, 63, 71, 75, 80	Ø67
	100, 125	Ø77
	160, 200, 250	Ø87
XRNT1-12	6.3, 10, 16, 20, 25, 31.5, 40	Ø51
	50, 63, 71, 75, 80	Ø67
	100, 125	Ø77
	160, 200, 250	Ø87

Electromotor protection

Type	Rated current	ØD
XRNM1-7.2	25, 31.5, 40, 50, 63, 80, 100, 125 160, 200, 224, 250, 315	Ø77
	25, 31.5, 40, 50, 63, 80, 100, 125 160, 200	Ø87

Busbar fuse

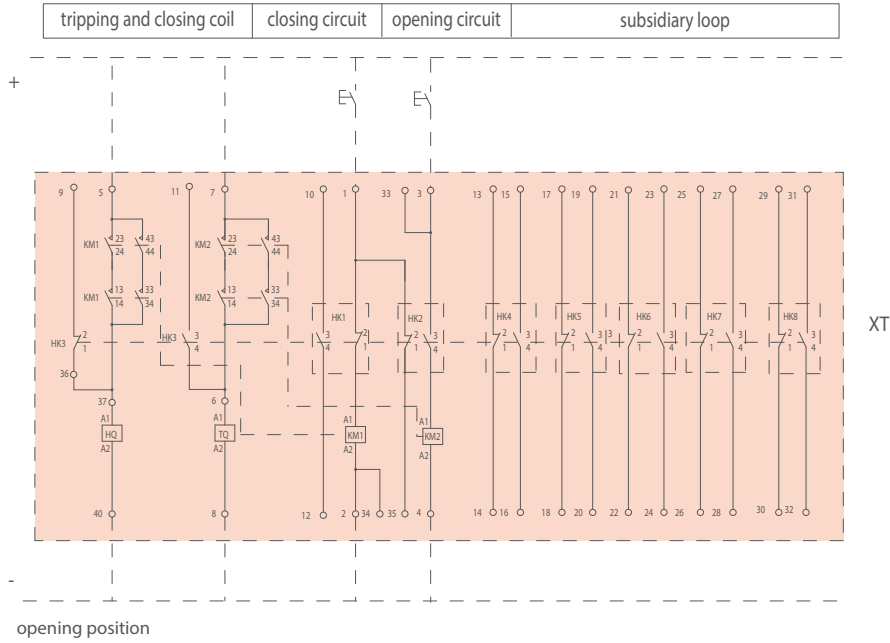


Electromotor protection

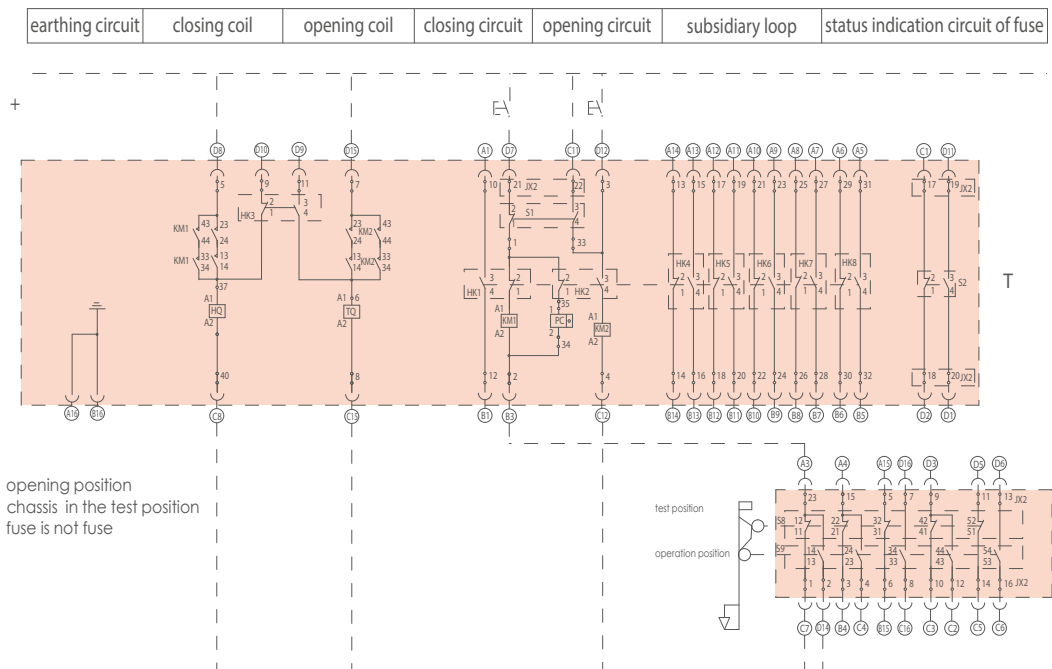
Type	Rated current	ØD
WKND0-7.2M	355	Ø86
WKND0-12M	224	Ø86

ELECTRICAL CONNECTION DIAGRAM

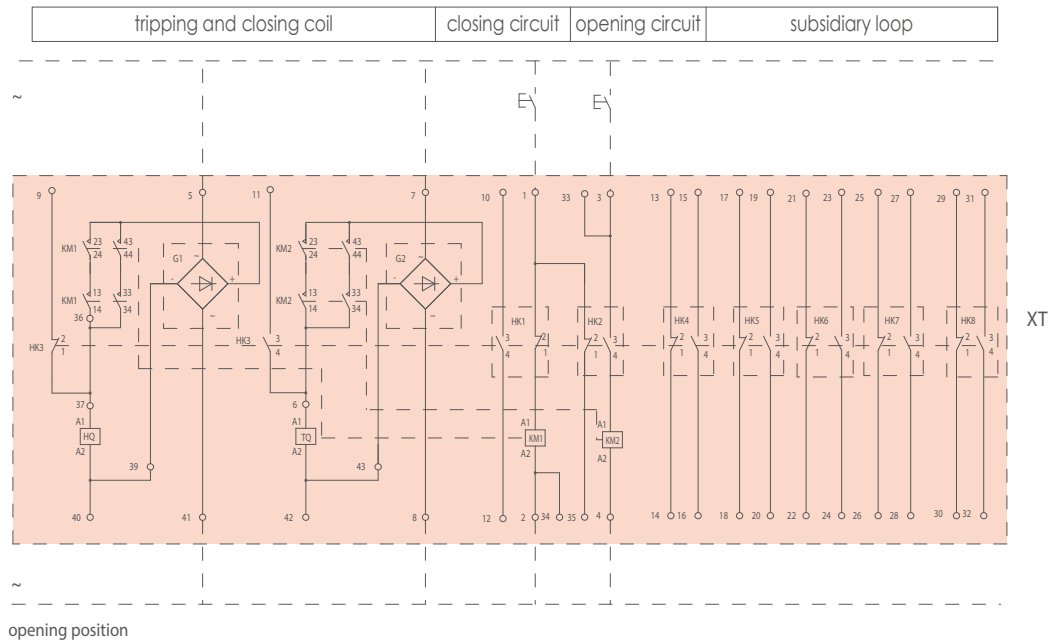
Fixed VC Mechanical Holding (DC)



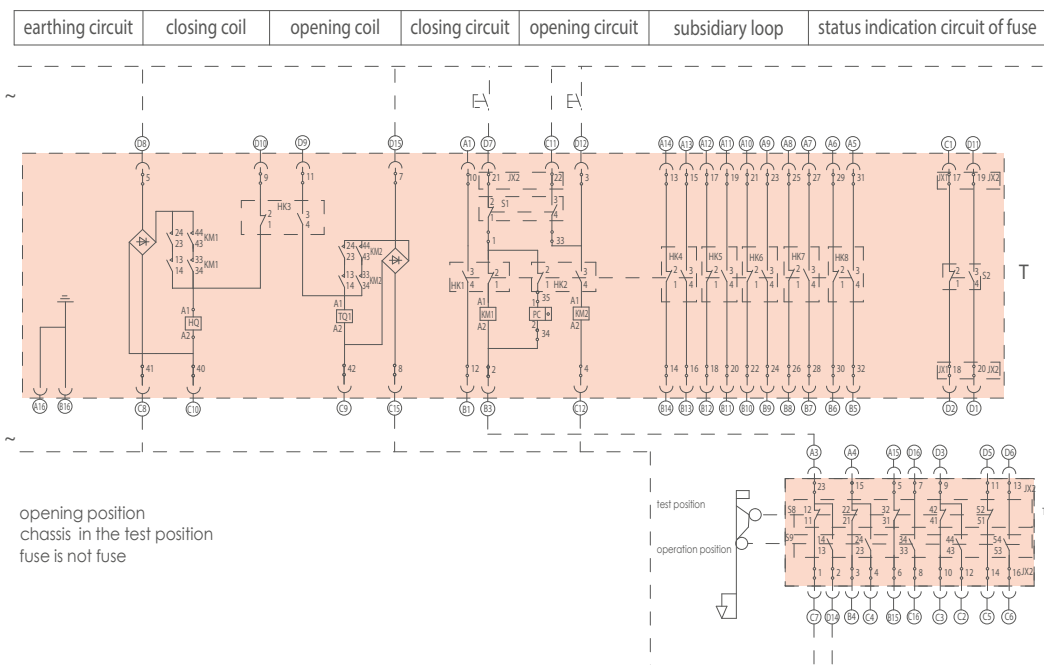
Vacuum Contactor-fuse Combined Electric Appliance Mechanical Holding (DC)



Fixed VC Mechanical Holding (AC)

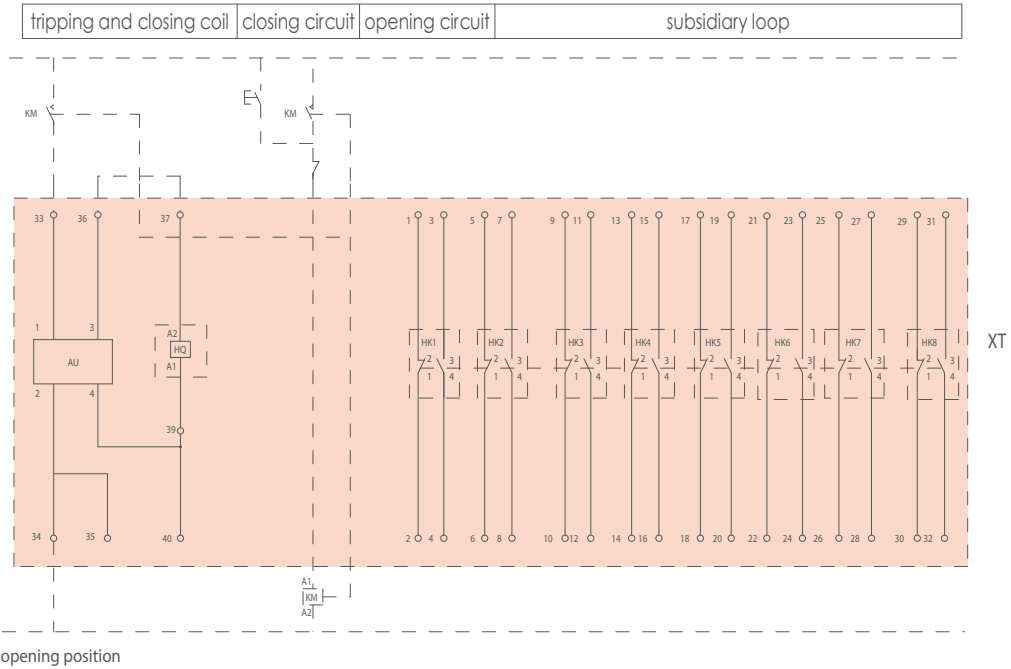


Vacuum Contactor-fuse Combined Electric Appliance Mechanical Holding (AC)



ELECTRICAL CONNECTION DIAGRAM

Fixed VC Electrical Holding (AC/DC)



Vacuum Contactor-fuse Combined Electric Appliance Mechanical Holding (AC/DC)

